



ABOUT
BLUE

GREENTOWN KIDS

t-shirt or dress

Greentown is a sleeveless t-shirt with a two-piece front. It is easy to make and the small details add cheerful touches. Front and the back have box pleats at the top. In the dress version you can add a waistband.

SIZING CHART

Use chest and hip circumference to choose the right size. The finished t-shirt has a casual length ending a few cm above hip height. The dress is knee length. Should the finished length in the sizing chart deviate much from your desired t-shirt length, the length of the t-shirt can be adjusted by cutting the pattern 5 cm below the armpit-markers and by adding or removing length.

SIZE	92	98	104	110	116	122	128	134	140	146	152	158
CHEST CIRCUMFERENCE	53,5	55	57	59	61	63	65,6	67,5	71	73	75	77
HIP CIRCUMFERENCE	56	58	60	62	64	66	68	70	72	76	81	85
FINISHED LENGTH T-SHIRT	31	33	36	38	40,5	43	45	48,5	50,5	53,5	56,5	59
FINISHED LENGTH DRESS	51	54	57,5	60,5	64	66	70	74	77	80,5	84,5	88

FABRIC: AMOUNT AND PRE-TREATMENT

The needed quantities are calculated for fabrics of 1.45 m wide. Wash or steam your fabric before cutting, to prevent shrinking. Quantities are in centimetres..

SIZE	92	98	104	110	116	122	128	134	140	146	152	158
T-SHIRT	45	50	50	55	55	55	60	60	65	80	85	90
DRESS	60	65	70	75	80	80	90	100	110	120	125	125

TYPE OF FABRIC

Greentown is designed for stretchy fabrics and falls beautiful when using a somewhat heavier fabric, such as French Terry, a heavier jersey or Punta di Roma.

TIP: to ribbon or not to ribbon?

- » A ribbon in the waist is a fun addition. But a whole bunch of ribbons is even more fun! For the dresses in the photo we used different pieces of About Blue bias tape, folded in half and stitched closed.
- » Absolutely no ribbons is also an option!



WAISTBAND DRESS

If you'd like a waistband in the dress, make sure you also have

- » 2 pieces of string to make loops. You can use ready-made string or pieces of bias tape (fold in half and stitch closed)
- » a ribbon with length:

SIZE	92	98	104	110	116	122	128	134	146	152	158
RIBBON	100	100	100	110	110	110	110	115	115	115	115

RAW EDGES

Do not finish the edges of your fabric before sewing: the instructions will indicate step by step when to do this.

CUTTING PLAN

SEAM ALLOWANCE

Seam allowance is included in all pattern pieces.

A - FRONT TOP: cut once on fold.

- » At right side of fabric, transfer marker A, within seam allowance, at one side of fabric fold.

B - FRONT BOTTOM: cut once on fold.

- » Transfer armpit markers (left and right) on wrong side of fabric
- » Dress with waistband: transfer the marking for the waist on the wrong side of the fabric, within the seam allowance.

C - BACK: Cut once on fold

- » At right side of fabric, transfer sewing line B at one side of fabric fold.
- » Transfer armpit markers (left and right) on wrong side of fabric.
- » Dress with waistband: transfer the marking for the waist on the right side of the fabric, within the seam allowance.

D -FACING FRONT: cut once on fold

E - FACING BACK: cut once on fold



TIP - front without pleat

Do you prefer a front without pleat? Then cut pattern piece A on 'sewing line for pleat' and skip steps 1 and 2 of these instructions.

TIP – grainline

If you like playing around with the print of your fabric, you can choose to NOT cut your pattern pieces on the grainline. In the photo pattern piece A is cut in the direction of the diagonal lines of the fabric. The neckline is wide enough to deviate from the grainline.



SEWING

(The photos can be found below the text.)

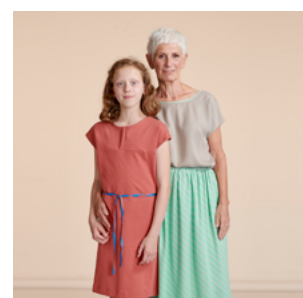
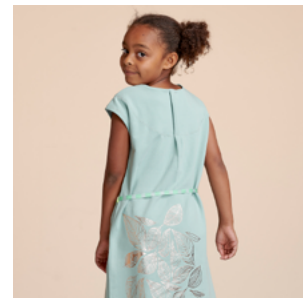
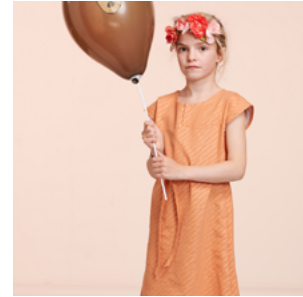
Sew with a 1cm seam allowance, unless otherwise indicated. Seams that connect different pattern pieces are stitched with a normal stitch length. For decorative seams use a larger stitch length, for example 3. Pinning isn't always mentioned, but is recommended

1. Fold pattern piece A (front top) in half on the fold, wrong sides together. Sew from marking A to marking A: topstitch at 2cm from the fold on the right side of the fabric.
2. Unfold piece A and press the pleat you just sewed. Baste top and bottom in the seam allowance, a few mm from the fabric edge.
3. Fold pattern piece C (back) in half on the fold, wrong sides together. Sew line B: topstitch the whole length of sewing line B at 2cm from the fold on the right side of the fabric.
4. Unfold C and press the pleat: only press the stitched part. Baste at the top, see step 2.
5. With right sides together, match pattern pieces A and C together at the shoulder seams and stitch at 1 cm. Press seam allowance towards the back (C).
6. With right sides together, match pattern pieces D and E together at the shoulder seams and stitch at 1 cm. Press seam allowance towards the front (D). Finish all raw edges using a zigzag or overlock stitch, except the bottom edge of pattern piece D.
7. Pin facing to front and back piece, right sides together.
 - » Match facing piece D with pattern piece A and facing piece E with pattern piece C.
 - » Start pinning at shoulder seams and continue around neckline.
 - » Stitch all around at 1 cm.
8. Fold facing through neckline, putting wrong sides of fabric together. Press neckline seam: roll fabric slightly inwards, making sure the fabric from front and back are just above facing. (See picture-insert)
9. Unfold facing pieces, the seam allowance should sit against the facing. At front and back pleat, understitch seam allowance on facing. Do not stitch the front and back piece: the stitching is only visible on the inside of t shirt, making sure that the facing does not curl outwards during wearing.
10. Right sides together, pin pattern piece A to pattern piece B, along with facing piece D. Stitch at 1 cm. Press seam allowance downwards, towards pattern piece B.
11. Pin facing piece E neat and flat along arch to the back. Make sure that the pleat is pinned flat.
12. Stitch arch to back. Two options are available. Read both options before deciding on which one you will use.
 - » **12A** If the bottom stitches of your sewing machine are even enough to be seen at the visible side of the fabric, stitch facing with right side down. Use a bobbin thread that matches the colour of the fabric. Stitch facing piece E to pattern piece C using a zigzag stitch from shoulder seam to shoulder seam. Position sewing needle to the left. When stitching, make sure that on the left side of the

zigzag stitch the needle stitches just next to the fabric. On the right side of the zigzag stitch the needle should stitch in the fabric. This way the facing is stitched smoothly against the back.

» **12B** If the bottom stitches of your sewing machine are not as even as the top stitches, turn t-shirt right side out. Pin facing flat on the outside too and remove pins from the underside. Trim 1 cm from paper pattern piece E and transfer arch on bottom of facing with chalk or a removable marker pen. Stitch facing with a zigzag stitch from shoulder seam to shoulder seam, following drawn arch.

13. Finish raw edges at top, bottom, and sides.
14. Press a seam of 1,5 cm on both sides of arm holes, from armpit marker to armpit marker. Press hem in front and back piece of 3 cm.
15. If you are making a t-shirt or dress without waistband, go to step 16. If you are making a dress with a string in the waist, add the loops now. Fold a piece of string for the loop in half and place it on the right side of the back piece on the marker. Zigzag in place within the seam allowance. Repeat on the other side.
16. With right sides together, match front and back together and pin the side seams: start at armpit markers and pin down to the hem. Stitch at 1,5 cm. If you are making a dress with a waistband, go back and forth where the loops are. Press the seam open.
17. Press the hem back in shape. Finish the hem with a zigzag stitch. See step 12.
18. Stitch around armholes at 1 cm with a zigzag stitch. Again, you can use the technique from step 12 A if the stitch of your sewing machine allows it. If so, do not stitch at 1cm, but zigzag on the edge of the seam allowance like in step 12 A.
19. If you are making a dress with a ribbon, thread the ribbon through the loops. Tie a knot at the ends.



Klaar? Time to show!

@aboutbluefabrics

#greentownpattern #aboutblue

