



## ABOUT BLUE

# T-TIME

## t-shirt for women

T-time is a simple women's t-shirt with cut-on sleeves and a beautiful neckline. The rounded V-neck gives a feminine touch to a super comfortable garment.

### CHOOSE THE RIGHT SIZE

Do not choose the confection size, but take your body measurements. Use the chest circumference as a reference and read the correct size from the table

#### SIZE CHART

SIZE	32	34	36	38	40	42	44	46	48
CHEST	79 cm	83 cm	87 cm	91 cm	95 cm	99 cm	103 cm	107 cm	111 cm
MIDDLE BACK LENGTH	59,5 cm	60 cm	60,5 cm	62 cm	62,5 cm	64 cm	64,5 cm	66 cm	66,5 cm

### MATERIAL

The pattern is beautiful in French Terry, jersey or stretch terry (sponge). For the neckline you use border fabric. For the sleeves and bottom edge you can choose between finishing with a hem, or ribbing.

### PRETREATMENT

French Terry or stretch terry (sponge) should be pre-washed at normal temperature, or ironed with hot steam so that it shrinks beforehand.

### NEEDED

MAAT	32	34	36	38	40	42	44	46	48
FABRIC (130 CM WIDE)	70 cm	70 cm	70 cm	70 cm	80 cm	95 cm	135 cm	140 cm	145 cm
RIBBING (70 CM WIDE)	12 cm	12 cm	12 cm	12 cm	12 cm	12 cm	12 cm	18 cm	18 cm



## CUTTING SCHEME

1 cm seam allowance is included in the pattern. At the bottom edge and sleeve edges, 1.5 cm hem is included.

The scheme is based on fabric with a minimum width of 130 cm.

### • 1 PATTERN PREPARATION

If you are finishing the sleeves/bottom edge with ribbing, trim the pattern to the cut line.

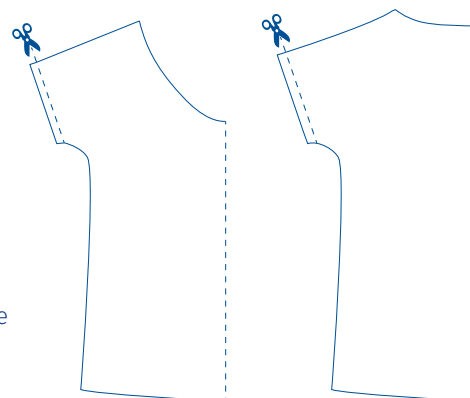
### • 2 FABRIC

#### FRONT

- Cut pattern piece 1 (front) 1 time on the fabric fold.
- Mark MF at the top of the neck and transfer the markings to the sleeve in the seam allowance.

#### BACK

- Cut pattern piece 2 (back) 1 time on the fabric fold.
- Mark MB at the top of the neckline.



### • 3 BOORDSTOF

#### NECKLINE

- Cut out pattern piece 3 (neckline) once from ribbing.
- Copy the markings with removable marker, or make cuts.

#### SLEEVE CUFFS

- If you are finishing the sleeve ends with ribbing, cut pattern piece 4 (sleeve cuff) twice from ribbing.
- Copy the markings with removable marker, or make cuts.

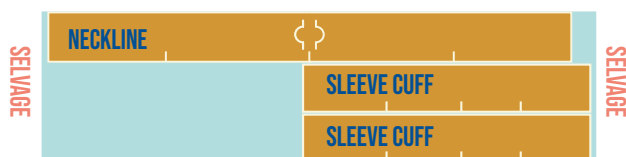
Note: The drawing is the fabric plan for the largest size! For smaller sizes, you can place both pattern pieces side by side on the fabric.



#### RIBBING SIZE 32 - 44



#### RIBBING SIZE 46 - 48



## REGULAR SEWING MACHINE VERSUS OVERLOCK MACHINE

We make the t-shirt with a combination of the overlock machine and regular sewing machine. You can also put it together with the normal sewing machine. The instructions for both machines are in the manual.

## Sewing

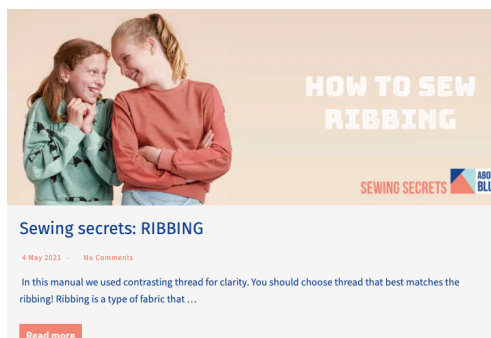
Sewing is done at 1 cm, unless stated otherwise. Attention: in the seams, 1 cm of seam allowance is included. If you work with the overlock machine, you will cut off a piece of the seam value at 1 cm when stitching.

Also included are the 1.5 cm hems on the bottom edge and on the sleeves (if you do not finish with ribbing).

This manual refers to the ribbing tutorial that you can find on our website:

### ATTACHING RIBBING

<https://aboutblue.be/sewing-secrets-ribbing/?lang=en>







## ABOUT BLUE



•1 Pin the shoulder seams together.



•2 Stitch the shoulder seams at 1 cm with a zigzag or overlock stitch.



•3 Iron the shoulder seams in the direction of the back piece.



•4 Are you finishing the sleeves with ribbing? Then go to step 6. Are you finishing the sleeves with a hem? Then finish both sleeve openings with a zigzag or overlock stitch.



•5 Iron the 1.5 cm hem in both sleeves. Then fold the hem back open.



•6 Pin the side seams closed and stitch at 1 cm with a zigzag or overlock stitch.





- 7 Iron the side seams in the direction of the back.



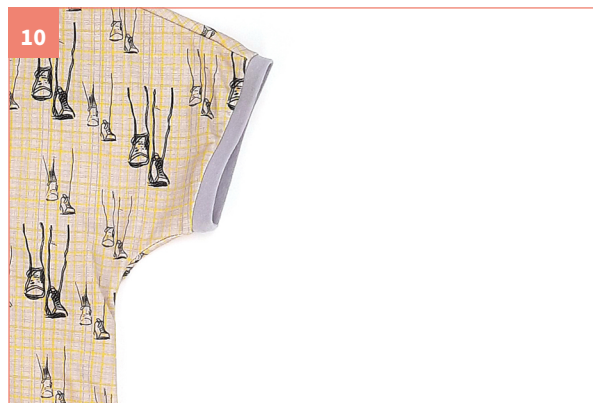
- 8 Press a 1.5 cm hem in the bottom of the t-shirt and stitch. Read the tip at the bottom.



- 9 Are you finishing the sleeves with ribbing? Then go to step 10. Are you finishing the sleeves with a hem? Then iron the hem back into the sleeves and stitch in place with a zigzag stitch.

## TIP - sew inside out

If the stitch on your machine is regular enough to be used on the visible side of the fabric, stitch the hem with the right side of the fabric facing down. This way you can stitch exactly on the fabric edge and your hem will sit flat. Thread your machine with a bobbin thread that matches the fabric colour.



- 10 Are you finishing the sleeves with ribbing? Use our online ribbing tutorial: <https://aboutblue.be/techniek-boordstof/>



- 11 Finish the neckline with ribbing according to the online ribbing tutorial: <https://aboutblue.be/techniek-boordstof/>. Let the seam in the border fabric line up with MB. The markings on the ribbing of the neckline are spaced to correspond with MV and the side seams.



Ready? Time to show!

[@aboutbluefabrics](https://twitter.com/aboutbluefabrics)

#ttimepattern #aboutblue

