



ABOUT
BLUE

T-TIME MINI

t-shirt for children



T-time is a simple universal children's t-shirt. Choose long or short sleeves. Finish the sleeves and bottom edge with ribbing or a hem. Ready for mass production!

CHOOSE THE RIGHT SIZE

Do not choose the confection size, but take your body measurements. Use the chest circumference as a reference and read the correct size from the table.

SIZE CHART

SIZE	92	98	104	110	116	122	128	134	140	146	152	158	164
CHEST	53 cm	55 cm	57 cm	59 cm	61 cm	63 cm	65 cm	67 cm	69 cm	71 cm	73 cm	76 cm	79 cm
MIDDLE BACK LENGTH	30 cm	32,5 cm	35 cm	37,5 cm	40 cm	42,5 cm	45 cm	47,5 cm	50 cm	52,5 cm	55 cm	57,5 cm	60 cm

MATERIAL

The pattern is beautiful in French Terry, jersey or terry cloth. For the neckline you use ribbing. For the sleeves and bottom edge you can choose between finishing with a hem or ribbing.

PRETREATMENT

French Terry or terry cloth should be pre-washed at normal temperature, or ironed with hot steam so that it shrinks beforehand.

WHAT DO YOU NEED

SIZE	92	98	104	110	116	122	128	134	140	146	152	158	164
FABRIC LONG SLEEVE (130 CM WIDE)	35 cm	35 cm	40 cm	40 cm	45 cm	45 cm	50 cm	65 cm	90 cm	95 cm	105 cm	110 cm	115 cm
FABRIC SHORT SLEEVE (130 CM WIDE)	35 cm	35 cm	40 cm	40 cm	45 cm	45 cm	50 cm	65 cm	65 cm	65 cm	65 cm	65 cm	65 cm
RIBBING (70 CM WIDE)	23 cm	28 cm	28 cm	28 cm	28 cm	28 cm	28 cm	28 cm	28 cm	28 cm	28 cm	28 cm	28 cm



**ABOUT
BLUE**

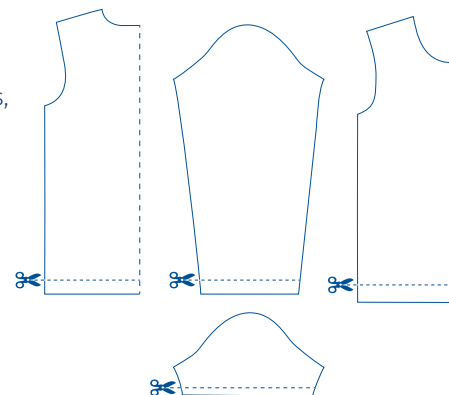
CUTTING SCHEME

1 cm seam allowance is included in the pattern. At the bottom edge and sleeve edges, 1.5 cm hem is included.

The scheme is based on fabric with a minimum width of 130 cm.

• 1 PATTERN PREPARATION

If you are finishing the sleeves/bottom edge with ribbing, trim the pattern to the cut line.



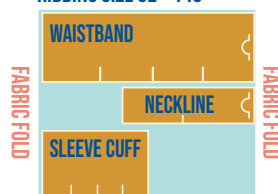
LONG SLEEVE



SHORT SLEEVE



RIBBING SIZE 92 - 140



RIBBING SIZE 146 - 164



Note: The drawing for the long sleeve is the fabric plan for the largest size! For smaller sizes, you can place both pattern pieces side by side on the fabric.

• 2 FABRIC

FRONT

- Cut pattern piece 1 (front) 1 time at the fabric fold.
- Mark MF at the top of the neck and transfer the markings for the sleeves in the seam allowance.
- If you are finishing with ribbing, also copy the markings on the lower edge.

BACK

- Cut pattern piece 2 (back) 1 time on the fabric fold.
- Mark MB at the top of the neckline. If you are finishing with ribbing, also copy the markings on the bottom edge.

SLEEVES

- Cut out pattern piece 3 (long sleeve) or 4 (short sleeve) 2 times from the fabric: once normal and once mirrored.
- Trace the markings on the sleeve bow with removable marker or make a cut.
- If you are finishing with ribbing, also copy the markings on the bottom edge.



• 3 RIBBING

NECKLINE

- Cut out pattern piece 5 “neckline” 1 time on fabric fold.
- Copy the markings with removable marker or make cuts.

SLEEVE CUFFS

- If you are finishing the sleeve ends with ribbing, cut the pattern part “sleeve cuff” twice from ribbing. For the long sleeve take part 7 (“sleeve cuff 1”), for the short sleeve take part 8 (“sleeve cuff 2”).
- Copy the markings with removable marker, or make cuts.

WAISTBAND

- If you are finishing the bottom hem with ribbing, cut the pattern piece “waistband” once on fabric fold up to size 140. From size 146: cut out the pattern part “waistband” 2 times.
- Copy the markings with removable marker, or make cuts.

REGULAR SEWING MACHINE VERSUS OVERLOCK MACHINE

We make the t-shirt with a combination of the overlock machine and regular sewing machine. You can also put it together with the normal sewing machine. The instructions for both machines are in the manual.

Sewing

Sewing is done at 1 cm, unless stated otherwise. Attention: in the seams, 1 cm of seam allowance is included. If you work with the overlock machine, you will cut off a piece of the seam value at 1 cm when stitching.

Also included are the 1.5 cm hems on the bottom edge and on the sleeves (if you do not finish with ribbing).

This manual refers to the ribbing tutorial that you can find on our website:

ATTACHING RIBBING

<https://aboutblue.be/sewing-secrets-ribbing/?lang=en>





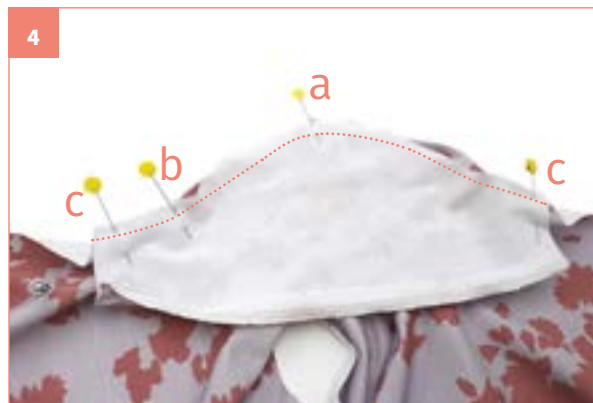
•1 Pin the shoulder seams right sides together. Stitch on 1 cm with a zigzag or overlock stitch.



•2 Iron the shoulder seams in the direction of the back piece.



•3 Are you finishing the sleeves with ribbing? Then go to step 4. Are you finishing the sleeves with a hem:
- Finish the bottom edge with a zigzag or overlock stitch.
- Iron the 1.5 cm hem in both sleeve panels.
- Then fold open again.



•4 Pin the sleeve in the sleeve opening, right sides together:

- start with the mark at the head of the sleeve, pinning it exactly to the shoulder seam (a);
- then pin mark (b) to the mark on the front;
- Pin the corners in place. (c)

Stitch at 1 cm, stretching the fabric while stitching. Repeat with the second sleeve.



•5 Iron the seams in the direction of the front and back.



•6 Pin the side seams with the right sides of the fabric together and stitch at 1 cm with a zigzag or overlock stitch.



ABOUT BLUE



- 7 Iron the side seams in the direction of the back.



- 8 Are you finishing the bottom edge and sleeves with ribbing? Then go to step 11. Are you finishing the sleeves with a hem? Then finish the bottom edge with a zigzag or overlock stitch and iron a 1.5 cm hem in the lower edge.



- 9 Iron and pin the hem into the sleeves again.



- 10 Stitch the hem in the bottom edge and sleeves with a zigzag stitch. Read the tip!

TIP - sew inside out

If the stitch on your machine is regular enough to be used on the visible side of the fabric, stitch the hem with the right side of the fabric facing down. This way you can stitch exactly on the fabric edge and your hem will sit flat. Thread your machine with a bobbin thread that matches the fabric colour.



- 11 Finish the neckline with ribbing, use our online ribbing tutorial:
<https://aboutblue.be/sewing-secrets-ribbing/?lang=en>



- 12 If you want to finish the sleeve and bottom hem with ribbing, use our ribbing tutorial:
<https://aboutblue.be/sewing-secrets-ribbing/?lang=en>

Ready? Time to show!

[@aboutbluefabrics](https://twitter.com/aboutbluefabrics)

#ttimepattern #aboutblue

